

# **Workforce Planning and Action**

## **Current projects**

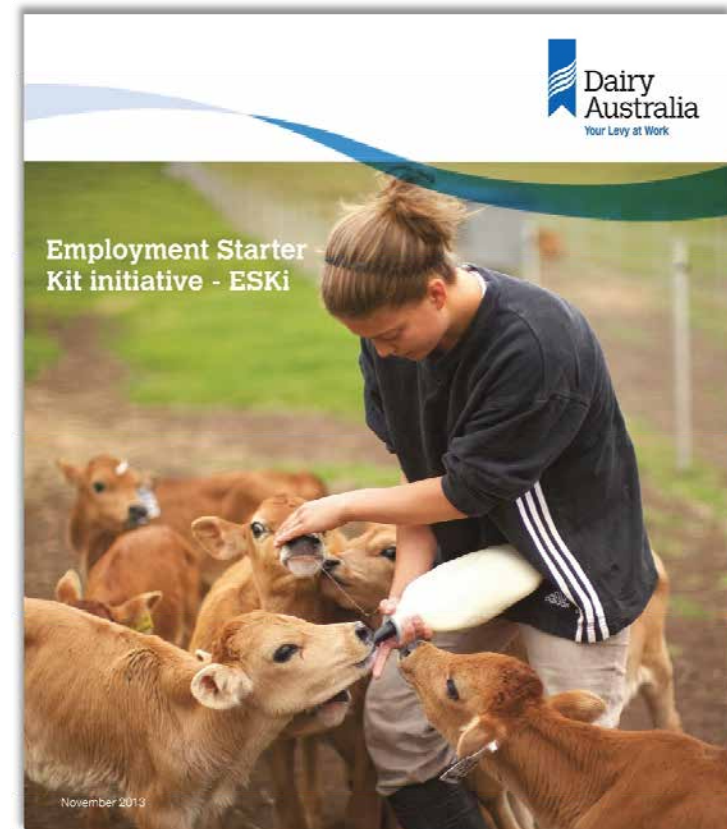
# Farmer Feedback for Collective Action on Regional Workforce Planning and Action



# Employment Starter Kit initiative

## ESKi

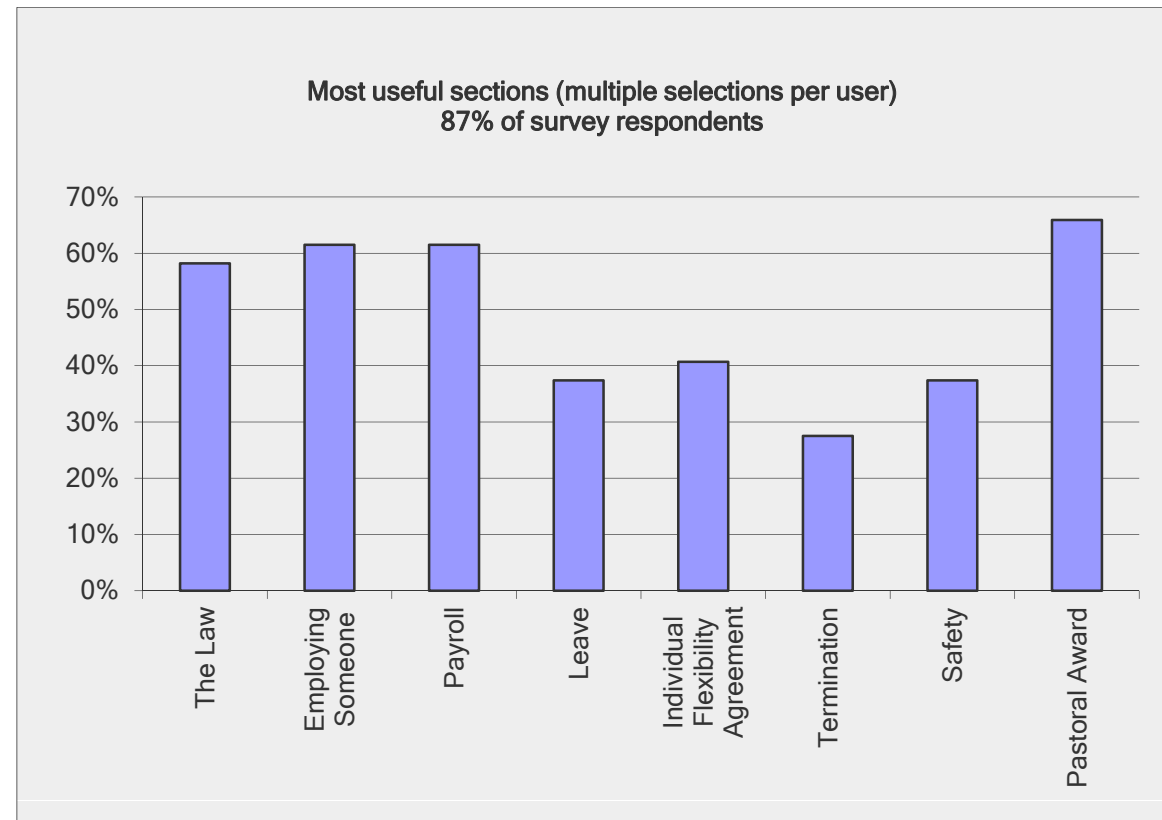
- The law
- Employing someone
- Payroll
- Leave
- Individual flexibility agreements
- Termination
- Safety
- Pastoral award



# ESKi user survey

## Key findings

- 78% of respondents have used their ESKi
- 86% indicated the ESKi has helped to improve their employment practices

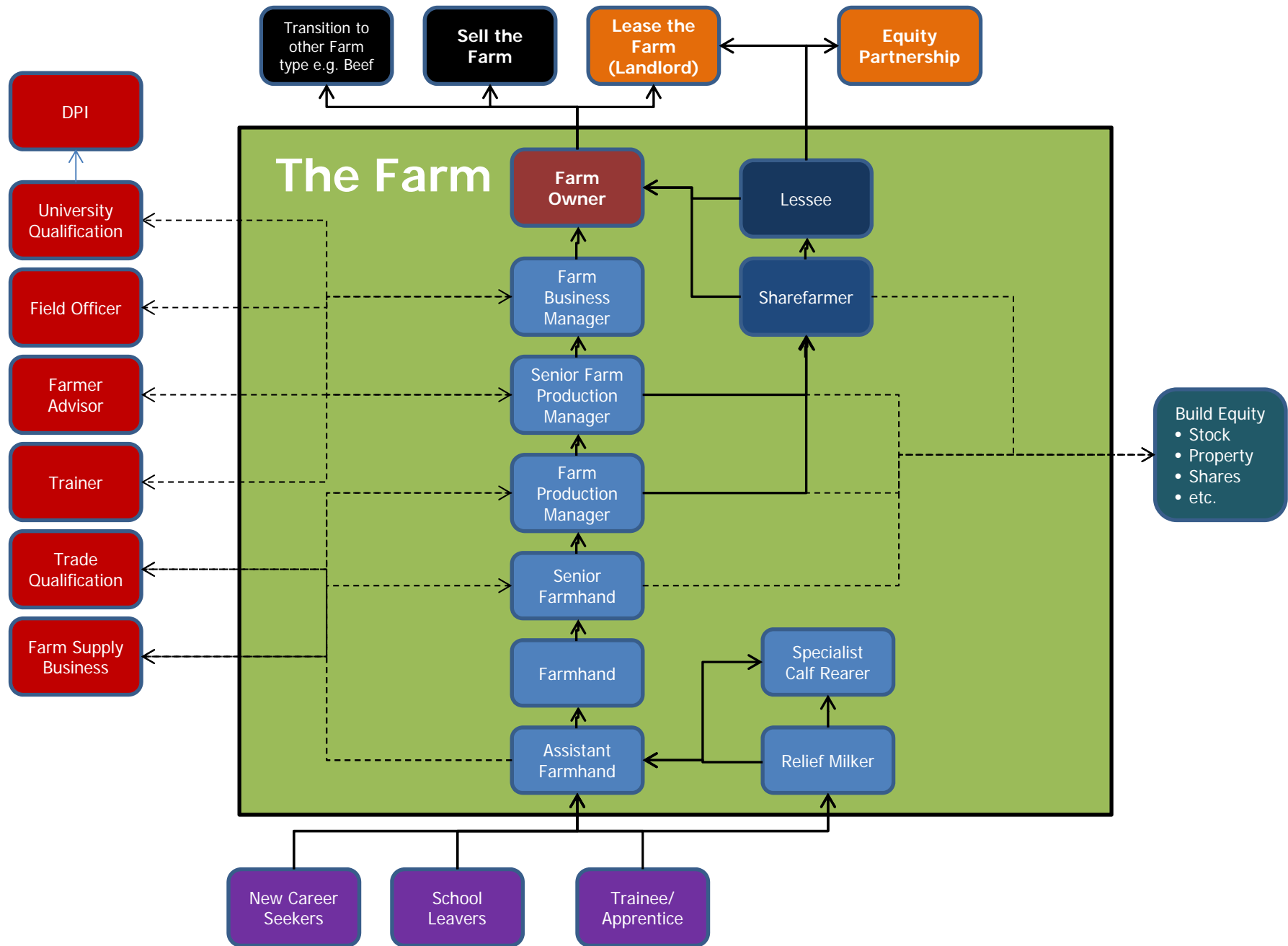


# Stepping Stones

- *Career pathways*
- *New or current employees*
- *Stepping Up*
- *Stepping Out*

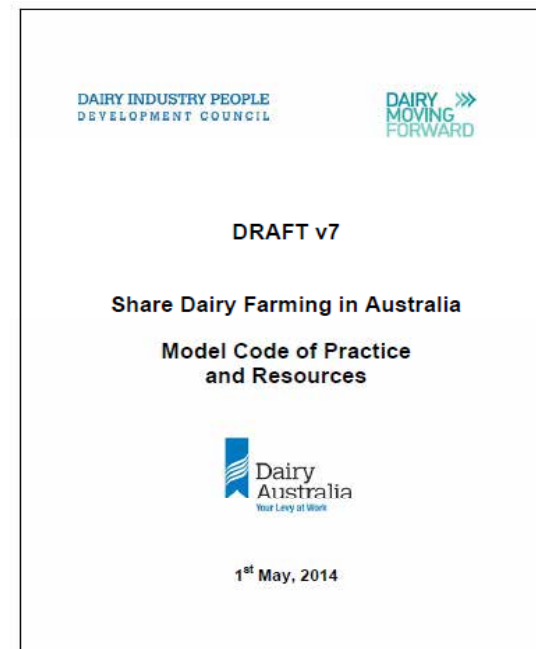


# Stepping Stones Into and Out of Dairy



## Dairy Share Farming - Model Code of Practice and Resources

An overview of features of fair and equitable arrangements and relevant Australian workplace laws.



Share dairy farming in Australia  
**Model Code of Practice**  
The industry-agreed approach to building successful  
share dairy farming arrangements

